



# Village of Deerfield

## 2021 Zoning Ordinance Map

### Lake and Cook Counties, Illinois

## Zoning Classifications

SYMBOL	DIST.	PERMITTED USES	MIN. LOT AREA	MIN. LOT WIDTH	MAX. LOT COVERAGE	PARKING REQUIREMENTS
	R-1	SINGLE FAMILY DISTRICT ONE FAMILY DWELLINGS AND ACCESSORY USES	20,000	100	35%	SEE ARTICLE 8. Z.O.
	R-2	SINGLE FAMILY DISTRICT SAME AS R1	12,000	80	35%	*
	R-3	SINGLE FAMILY DISTRICT SAME AS R1	9,000	75	35%	*
	R-4	SINGLE & TWO FAMILY ONE FAMILY & TWO FAMILY DWELLINGS & ACCESSORY USES	1-F - 9,000 2-F - 12,000	75	35%	*
	R-5	GENERAL RESIDENCE ONE FAMILY & TWO FAMILY DWELLINGS & ACCESSORY USES	1-F - 9,000 2-F - 12,000 M.F. - SEE Z.O.	S.F. & 2-F - 75 M.F. - 100	35%	*
	C-1	VILLAGE CENTER	NOT APPL. (2,500 D.U.)	NOT APPL.	75%	*
	C-2	OUTLYING COMMERCIAL	NOT APPL.	NOT APPL.	30%	*
	C-3	LIMITED COMMERCIAL OFFICE	NOT APPL.	NOT APPL.	25%	*
	I-1	OFFICE, RESEARCH, RESTRICTED INDUSTRIAL	5 ACRES	200 FT	35%	*
	I-2	LIMITED INDUSTRIAL	5 ACRES	150 FT	40%	*
	P-1	PUBLIC LANDS SCHOOLS, PARKS, PUBLIC BUILDINGS & CEMETERIES	NOT APPL.	NOT APPL.	40%	NOT APPL.

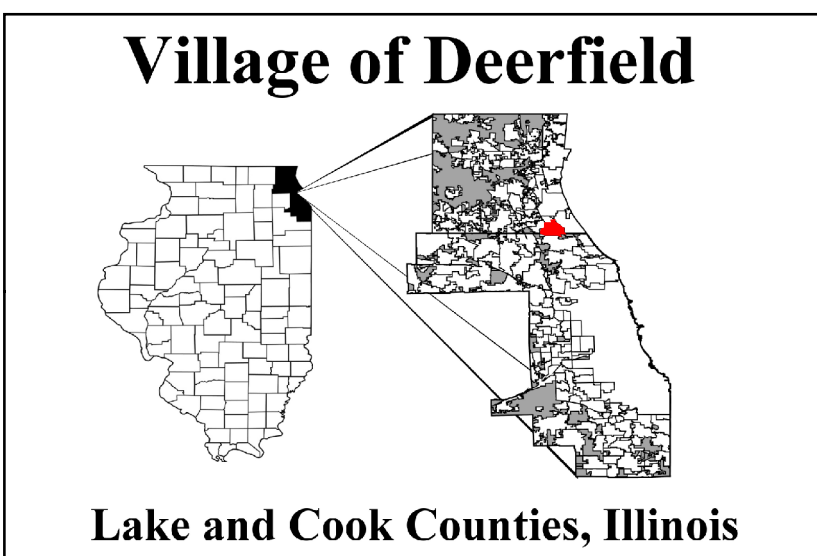
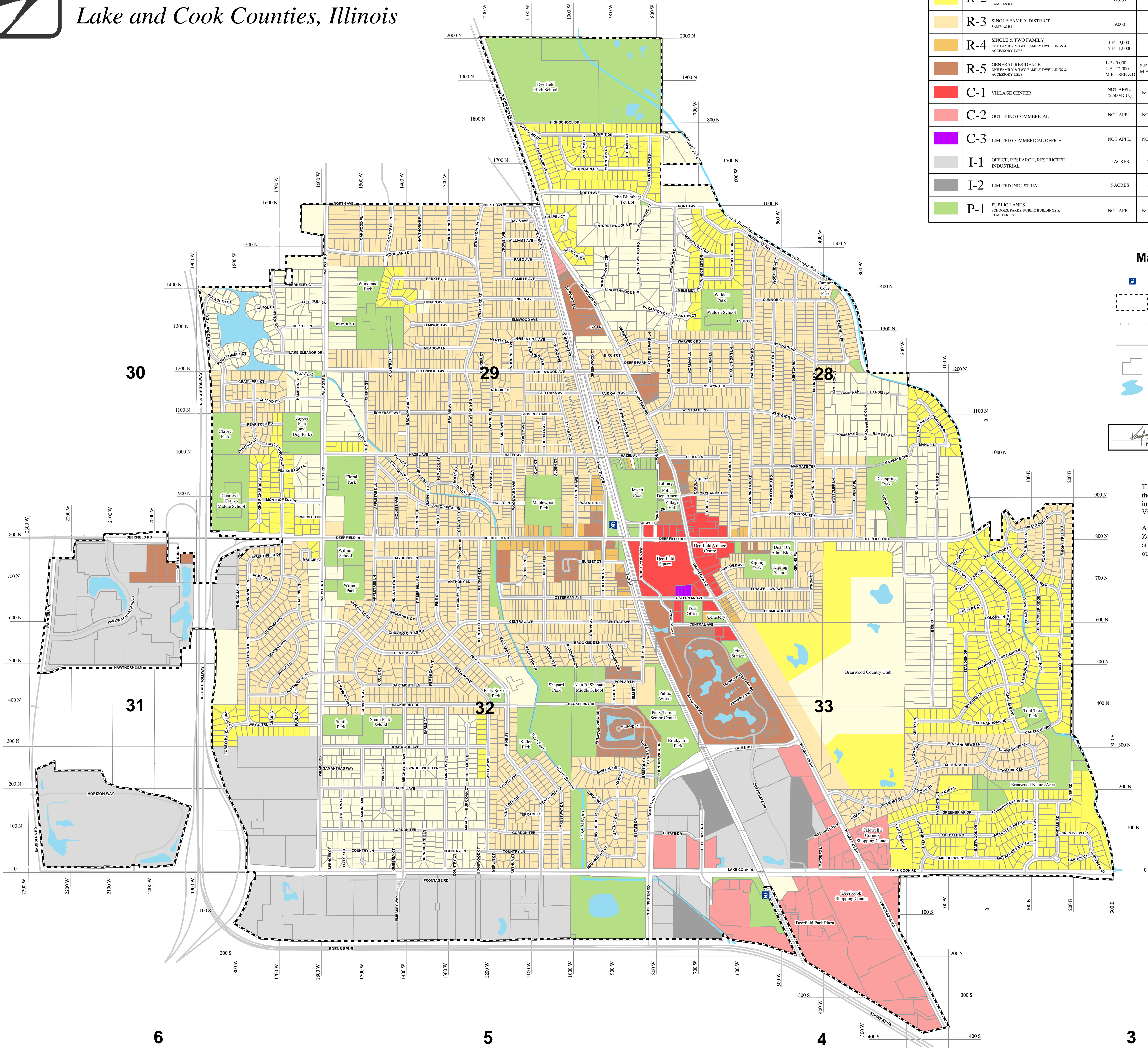
### Map Features

- Metra Station
- Corporate Limits
- Railroad
- Roads
- Parcels
- Water Features

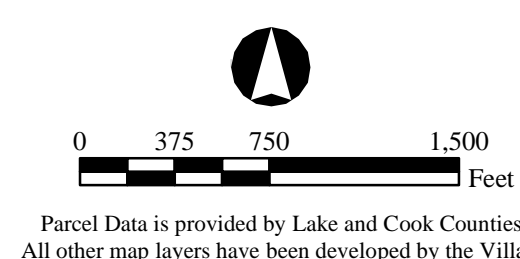
*John S. ...* 3/1/2021  
Name Date

This map does not reflect the division of land in accordance with the Village Ordinances.

All Rights-of-Way are unzoned. Zoning District boundaries end at property lines unless otherwise indicated.



**LAIMITATION OF LIABILITY:** The user agrees that it will at all times indemnify and hold the Village and its officers and employees harmless and free and clear of any liability arising from any act or omission or commission. The Village makes no claim as to the accuracy of this article and its associated data tables and assumes no responsibility for their position or content accuracy. In providing such articles the Village assumes no obligation to assist the user in the use, development, or maintenance of any applications derived from this article. The Village assumes no responsibility for the accuracy of any subsequent copies of this article.



**GIS**  
Consortium  
1/5/2021 AS