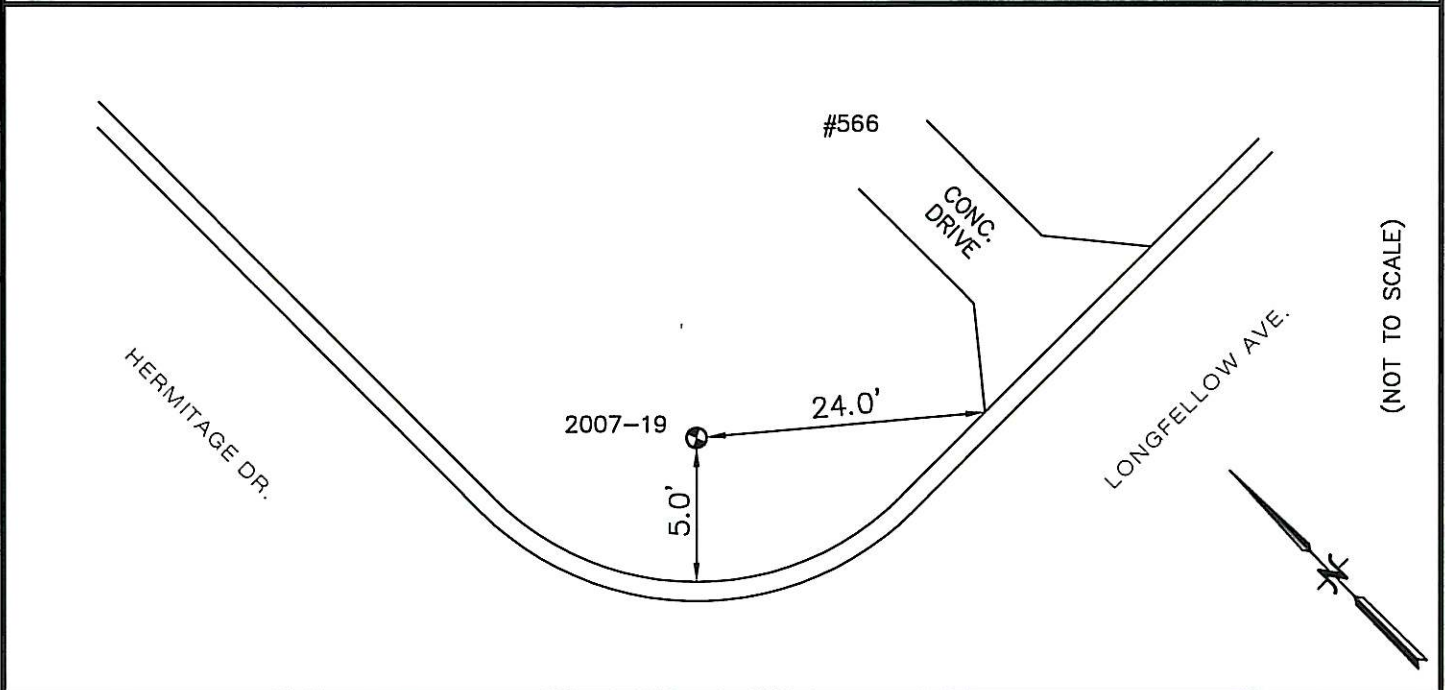


BENCH MARK VILLAGE OF DEERFIELD, IL

<u>LOCATION ADDRESS:</u> 566 LONGFELLOW AVE. DEERFIELD, IL	<u>MONUMENT</u> 2007-19	<u>DEPTH</u> 27'	<u>ELEVATION:</u> 688.77	<u>NORTHING:</u> 2003159.72 <u>EASTING:</u> 1117179.24
--	----------------------------	---------------------	-----------------------------	---

DESCRIPTION

NORTHEAST CORNER OF LONGFELLOW AVE. & HERMITAGE DR.
AT 566 LONGFELLOW AVENUE



COORDINATE INFORMATION:
HORIZONTAL COORDINATES ARE BASED ON IL STATE
PLANE COORDINATES, EAST ZONE GRID AS
ESTABLISHED BY GPS OBSERVATION. ELEVATIONS
ARE BASED ON NAVD 88 OBTAINED BY DIFFERENTIAL
LEVELING METHODS.



PREPARED BY:
Hampton, Lenzini, and Renwick Inc.
380 Shepard Drive
Elgin, Illinois 60123-7010
847-697-6700