



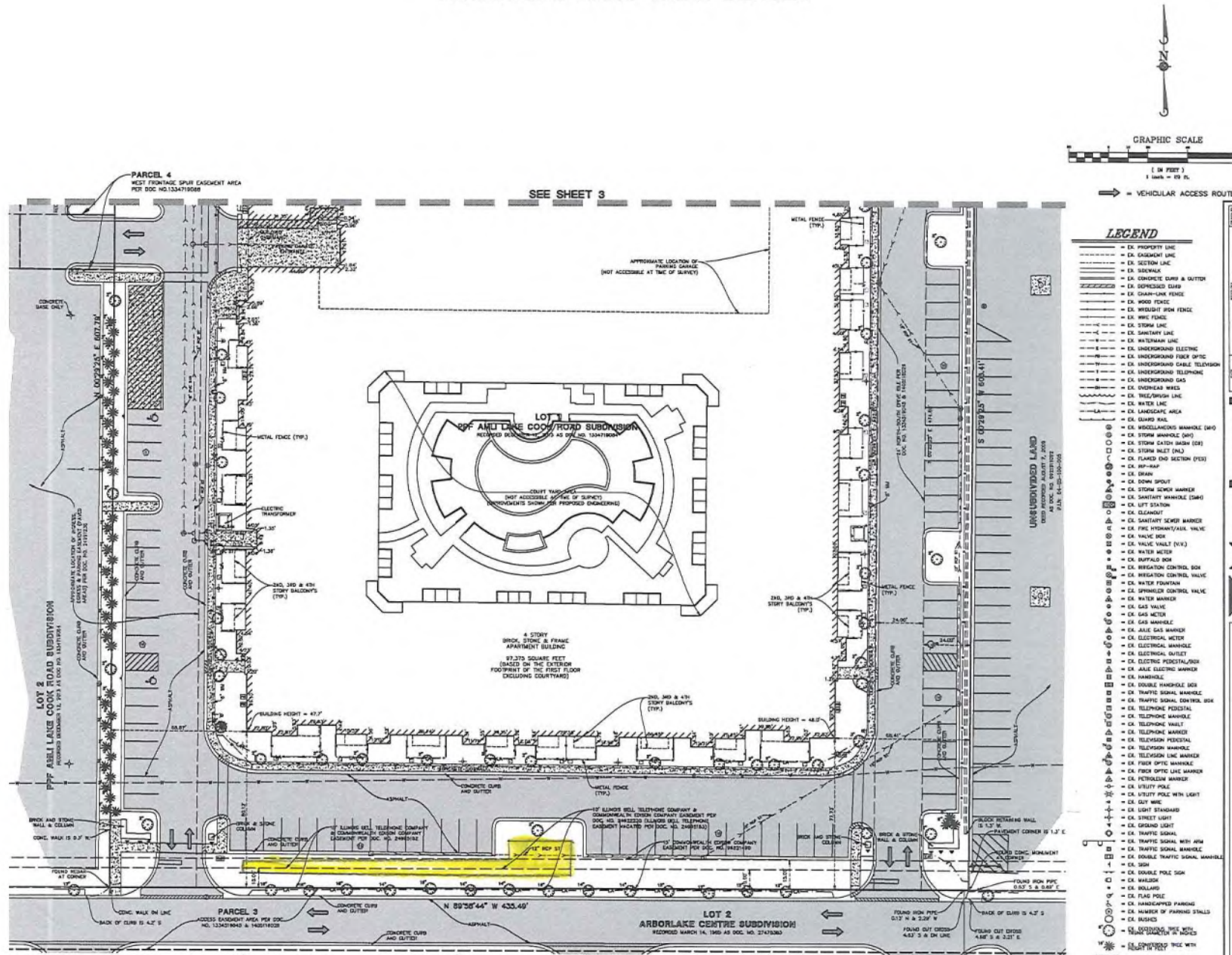
SUBMITTAL LIST for DOG RUN at AMLI Deerfield

1. Brief summary the request including an explanation for the need.
2. Scaled Site plan indicating where the dog run is being proposed (included in what was originally sent)
3. Plan with dimension of fenced area
4. Spec sheet of fencing that is being proposed (type of fence, and height of fence).
5. Spec sheet of artificial turf being proposed.
6. If any new lighting is proposed, plans for the lighting and hours of lighting are needed. If sufficient lighting already exists, please indicate this in the written materials.
7. Approval letter from property owner of the request.

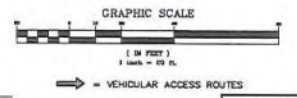
1. Majority of the AMLI Deerfield residents have dogs and have requested a dog run that allows for a fun, safe area for their dogs to go.
2. See attached.
3. See attached. Also submitted via email 7.16.2020
4. See attached.
5. See attached.
6. No lighting is being proposed.
7. See attached.

Dorie Roth
Senior Account Manager
Woodlawn's Landscape Company
Cell Phone: 847-770-3347

ALTA/NSPS LAND TITLE SURVEY



Area where dog run to be installed.
See dimensions on item #3

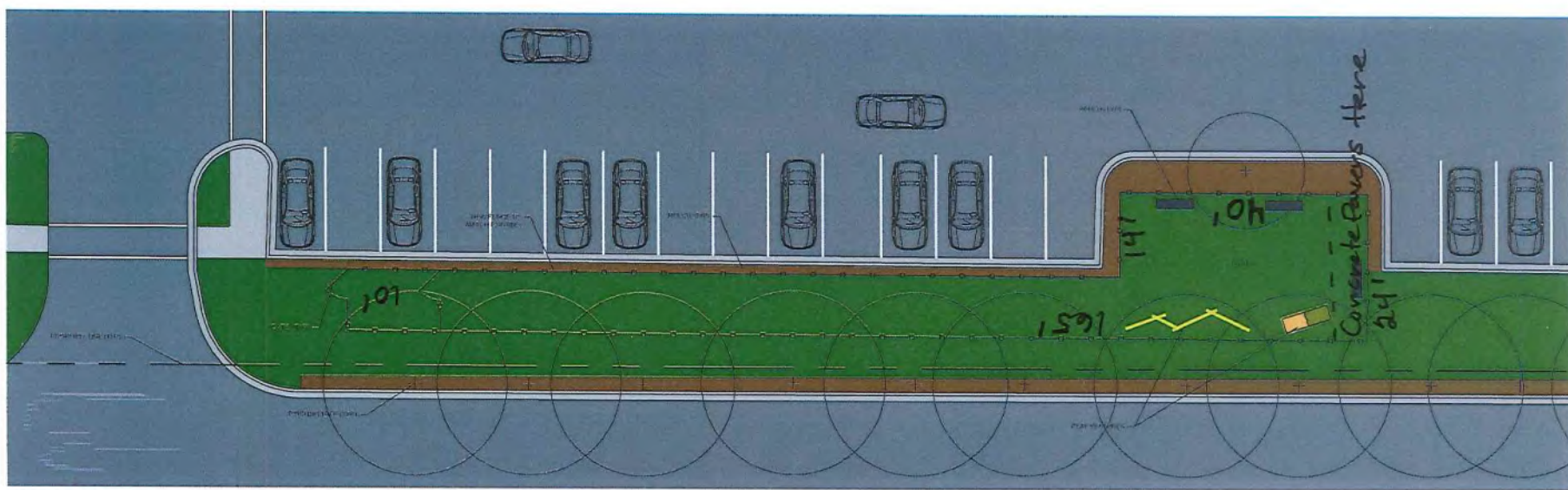


- LEGEND**
- - - - - DA PROPERTY LINE
 - - - - - DA EASEMENT LINC
 - - - - - DA SECTION LINE
 - - - - - DA SIDEWALK
 - - - - - DA CONCRETE CURB & GUTTER
 - - - - - DA SPRINGED CURB
 - - - - - DA CHAIN-LINK FENCE
 - - - - - DA WOOD FENCE
 - - - - - DA WREIGHT SIGN FENCE
 - - - - - DA WPC FENCE
 - - - - - DA STORM LINC
 - - - - - DA SANITARY LINC
 - - - - - DA WATERMAIN LINC
 - - - - - DA UNDERGROUND ELECTRIC
 - - - - - DA UNDERGROUND FIBER OPTIC
 - - - - - DA UNDERGROUND CABLE TELEPHONE
 - - - - - DA UNDERGROUND TELEPHONE
 - - - - - DA UNDERGROUND GAS
 - - - - - DA OVERHEAD WIRES
 - - - - - DA TELEPHONE LINC
 - - - - - DA WATER LINC
 - - - - - DA LANDSCAPE AREA
 - - - - - DA GRAVEL PAD
 - - - - - DA MISCELLANEOUS MANHOLE (SMO)
 - - - - - DA STORM MANHOLE (SM)
 - - - - - DA STORM GATE MANHOLE (SGM)
 - - - - - DA STORM VALET (SA)
 - - - - - DA FLOWED (NO SECTION) (FS)
 - - - - - DA JCP-RAA
 - - - - - DA DRAIN
 - - - - - DA DOWN SPOUT
 - - - - - DA STORM SEWER MARKER
 - - - - - DA SANITARY MANHOLE (SMH)
 - - - - - DA LIFT STATION
 - - - - - DA CLEANOUT
 - - - - - DA SANITARY SEWER MARKER
 - - - - - DA FIRE HYDRANT/VALVE
 - - - - - DA VALVE BOX
 - - - - - DA VALVE VALET (VAV)
 - - - - - DA WATER METER
 - - - - - DA BUFFALO BOX
 - - - - - DA IRRIGATION CONTROL BOX
 - - - - - DA IRRIGATION CONTROL VALVE
 - - - - - DA WATER FOUNTAIN
 - - - - - DA SPRINKLER CONTROL VALVE
 - - - - - DA WATER MARKER
 - - - - - DA GAS VALVE
 - - - - - DA GAS METER
 - - - - - DA GAS MANHOLE
 - - - - - DA JALE GAS MARKER
 - - - - - DA ELECTRICAL METER
 - - - - - DA ELECTRICAL MANHOLE
 - - - - - DA ELECTRICAL OUTLET
 - - - - - DA ELECTRICAL PENETRAL/BOX
 - - - - - DA JALE ELECTRICAL MARKER
 - - - - - DA JAMMINGLE
 - - - - - DA DOUBLE HANDBOLE BOX
 - - - - - DA TRAFFIC SIGNAL MANHOLE
 - - - - - DA TRAFFIC SIGNAL CONTROL BOX
 - - - - - DA TELEPHONE PEDISTAL
 - - - - - DA TELEPHONE MANHOLE
 - - - - - DA TELEPHONE MARKER
 - - - - - DA TELEVISION PEDISTAL
 - - - - - DA TELEVISION MANHOLE
 - - - - - DA TELEVISION LINC MARKER
 - - - - - DA FIBER OPTIC MANHOLE
 - - - - - DA FIBER OPTIC LINC MARKER
 - - - - - DA PETROLEUM MARKER
 - - - - - DA UTILITY POLE WITH LIGHT
 - - - - - DA GUY WIRE
 - - - - - DA LIGHT STANDARDS
 - - - - - DA STREET LIGHT
 - - - - - DA GRAND LIGHT
 - - - - - DA TRAFFIC SIGNAL
 - - - - - DA TRAFFIC SIGNAL WITH ARM
 - - - - - DA TRAFFIC SIGNAL MANHOLE
 - - - - - DA DOUBLE TRAFFIC SIGNAL MANHOLE
 - - - - - DA SIGN
 - - - - - DA DOUBLE POLE SIGN
 - - - - - DA WALKWAY
 - - - - - DA BOLLARD
 - - - - - DA FLAG POLE
 - - - - - DA HANDICAPPED PARKING
 - - - - - DA NUMBER OF PARKING SPOTS
 - - - - - DA BENCHES
 - - - - - DA TRAFFIC LIGHTER IN HOLES
 - - - - - DA TRAFFIC LIGHTER WITH HOLES
 - - - - - DA TRAFFIC LIGHTER WITH HOLES
 - - - - - DA BITUMINOUS PAVEMENT
 - - - - - DA CONCRETE
 - - - - - DA AGGREGATE
 - - - - - DA SPOK

Manhard CONSULTING LTD.
 11000 Highway 101, Unit 101, Markham, Ontario L3R 9V7
 Tel: (905) 477-8888 Fax: (905) 477-8889
 Website: www.manhardconsulting.com

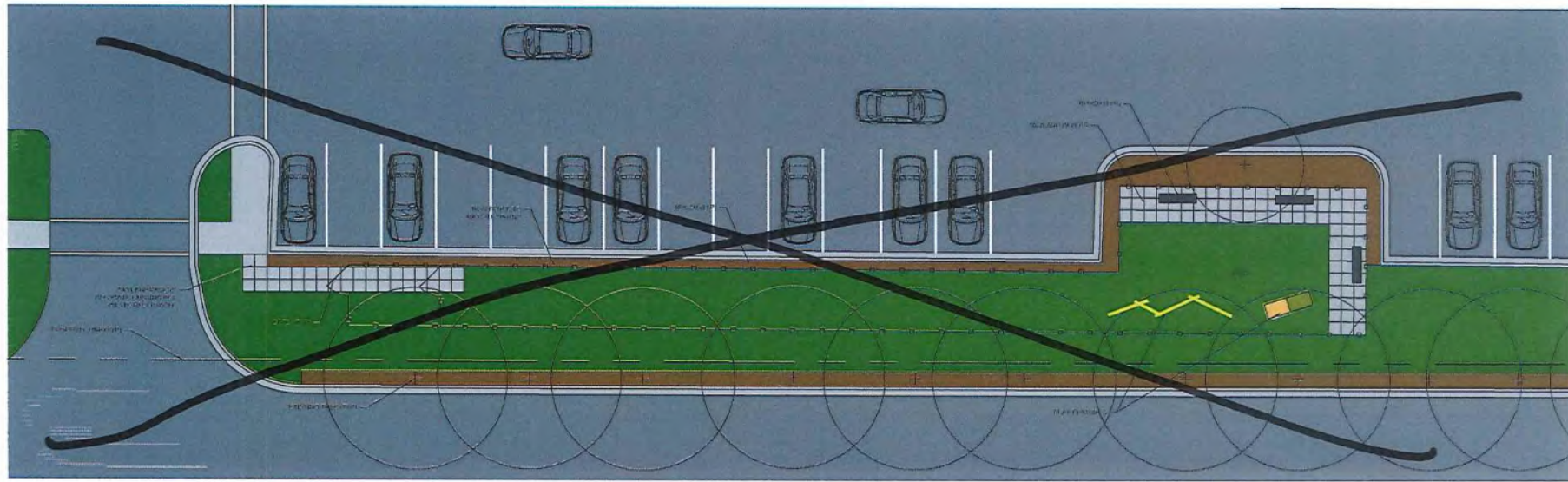
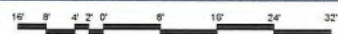
PPF AML LAKE COOK ROAD SUBDIVISION
 VILLAGE OF DEERFIELD
 ALTA/NSPS LAND TITLE SURVEY

DATE: 11/02/20
 SHEET: 4 OF 4
 AMDF 120790



Fence: 4' height Black gloss
 off 20-aluminum fence
 with double gates Matches
 existing.

AMLI DEERFIELD OPTION 1
 SCALE: 1/8"=1'-0"



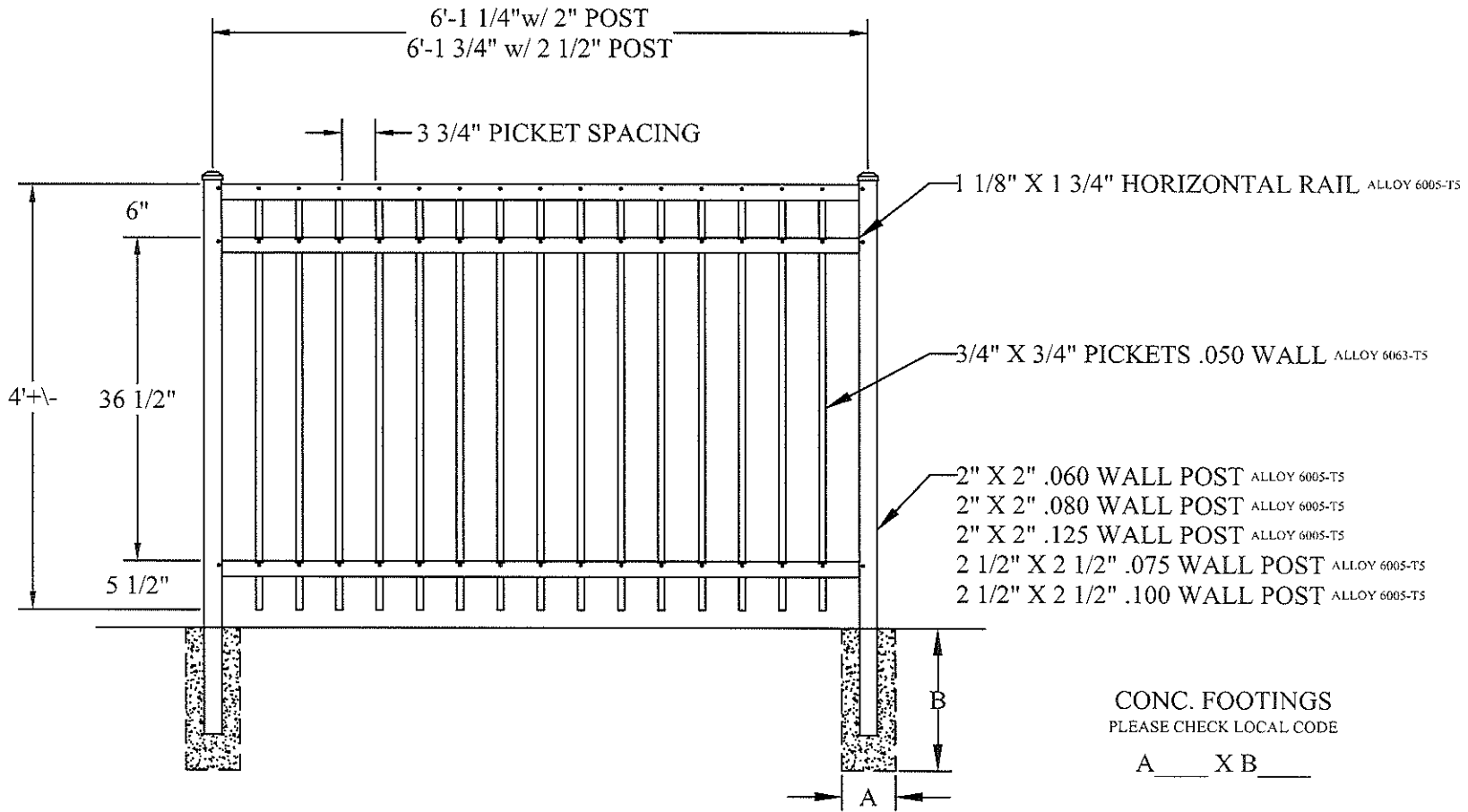
No

AMLI DEERFIELD OPTION 2
 SCALE: 1/8"=1'-0"



Woodlawn Landscape
 Company, Inc.
 224-206-7427

#4



NOTE: DRAWING NOT TO SCALE. ALL SECTIONS COME FULLY ASSEMBLED.

This drawing is the property of Elite Fence Products, Inc. It is not to be reproduced, copied, or traced in whole or part without written permission. See product specifications for installation requirements.

EFF-20 COMMERCIAL	4' HIGH 3-RAIL ALUMINUM FENCE PANEL	CONTRACTOR:	COLOR:	50925 RICHARD W. BLVD CHESTERFIELD TOWNSHIP, MI 48051 WWW.ELITEFENCE.COM 1-800-783-1331
	1-1-16 V.1.0 KS KS STD DRWG	PROJECT:	DATE:	

SOFTLAWN

ISLAND PRO



Lawn & Landscape



PROPERTY

- Primary/Stalk Yarn Polymer
- Secondary/Thatch Yarn Polymer
- Yarn Cross Section
- Standard Colors
- UV Stabilized
- Fabric Construction
- Primary Backing
- Coating Type(s)
- Perforations
- Recommended Infill
- Pile Height
- Total Weight
- ISO 9001 Quality Assured
- Roll Width
- Yarn Shape

DESCRIPTION

- Polyethylene
- Polyethylene
- Polyethylene Monofilament/Texturized Polyethylene
- Field/Lime
- Yes
- Tufted
- Dual Layered Woven Polypropylene
- SilverBack™ Polyurethane
- Yes
- 2 – 3 lbs of Silica Sand or Envirofill
- 1 8/32"
- 55 oz.
- Yes
- 15 Ft.
- Quad



ADVANTAGES

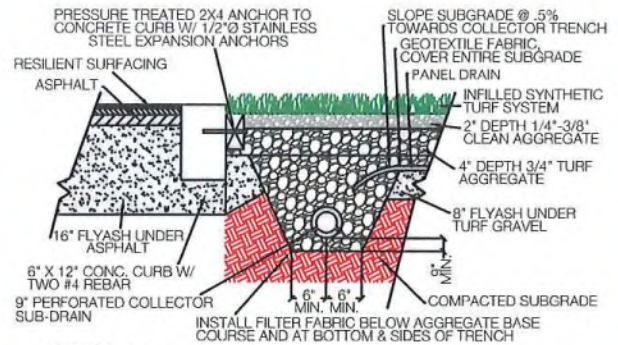
- Requires no water
- Virtually maintenance-free
- Fresh cut appearance
- Needs no chemicals or fertilizer
- Never needs mowing or insecticides
- Clean and can be cleaned - Unlike mulch and shredded rubber
- ADA/ABA compliant - Crutches won't sink in and wheelchairs roll
- Safety - No more buried glass or other harmful objects
- Lead Free
- Provides excellent drainage
- Recyclable components
- Does not support stain or odor causing bacteria, mold or mildew

SOFTLAWN

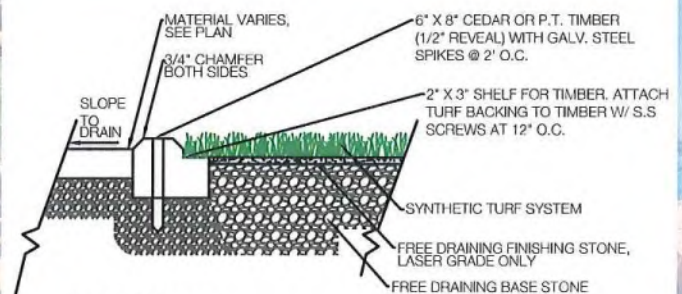
ISLAND PRO

BENEFITS

SoftLawn® Island Pro is our newest offering featuring the Quad yarn. Another very durable yarn that can stand up to traffic, this 1 1/4" product is another great option for landscape applications. This product features a four color blend of Field/Lime stalk yarns with an Olive/Tan thatch to provide a lifelike appearance and feel. The Silverback™ Polyurethane backing provides excellent drainage.



CURB



NAILER BOARD

It is the policy of Synthetic Turf International to continuously improve their line of products. Therefore, Synthetic Turf International reserves the right to change, modify or discontinue systems, specifications and accessories of all products at any time without notice or obligation to purchaser. These are standard specifications subject to manufacturing tolerances and consumer requests.



#7

AMLI
DEERFIELD

1525 Lake Cook Road
Deerfield, IL 60015
224-515-1490
Deerfield@amli.com

July 22, 2020

To: The Village of Deerfield, Plan and Design Committee

Re: Proposal of Dog Run at AMLI Deerfield

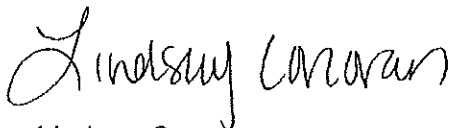
To Whom It May Concern,

I am the Community Manager at AMLI Deerfield, at 1525 Lake Cook Rd. AMLI Deerfield opened its doors in August of 2015 and operates 240 luxury apartments. We value being a member of the Deerfield community and have enjoyed the relationship we have established with the Village of Deerfield throughout this time.

Based on resident feedback, as a large number of our residents have dogs, we are proposing a dog run to the South border of our property. We believe this added amenity will maximize our resident experience and allow a safe and fun place for dogs to exercise and play.

Thank you so much for your consideration.

Best,



Lindsay Corcoran
Community Manager, on behalf of Owner
AMLI Deerfield