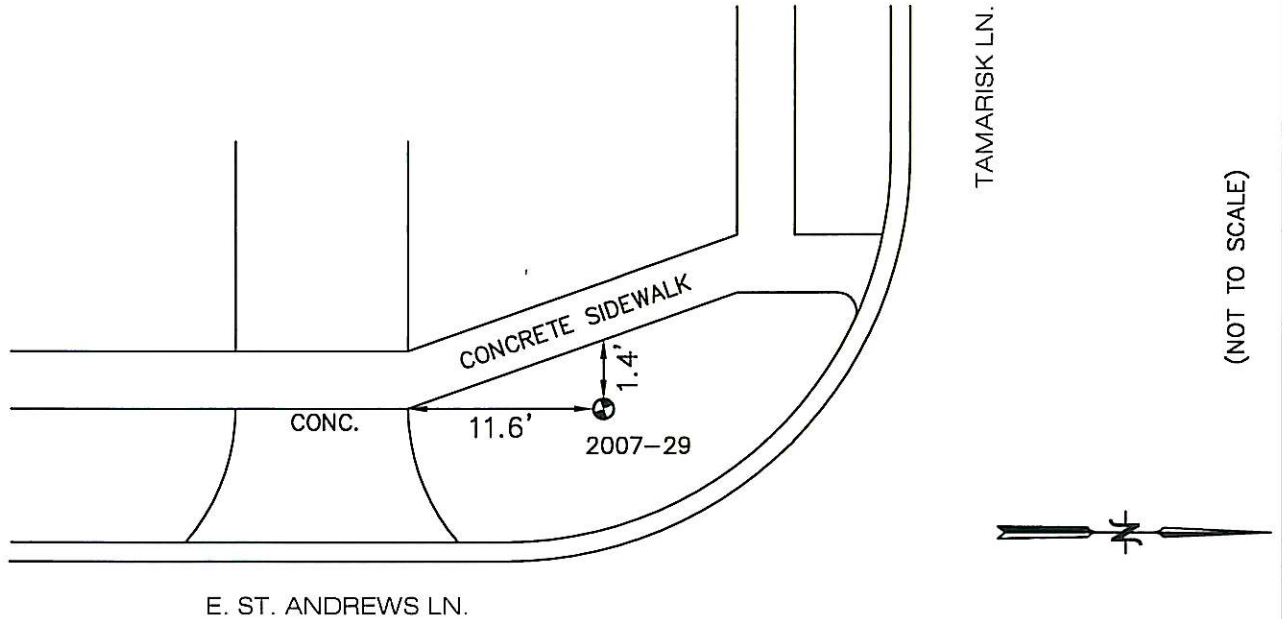


BENCH MARK VILLAGE OF DEERFIELD, IL

<u>LOCATION ADDRESS:</u> 214 E. ST. ANDREWS LN. DEERFIELD, IL	<u>MONUMENT</u> 2007-29	<u>DEPTH</u> 9'	<u>ELEVATION:</u> 657.30	<u>NORTHING:</u> 2000309.38 <u>EASTING:</u> 1121951.63
---	----------------------------	--------------------	-----------------------------	---

DESCRIPTION

SOUTHWEST CORNER E. ST. ANDREWS LN. & TAMARISK LN.
AT 214 E. ST. ANDREWS LANE



COORDINATE INFORMATION:
HORIZONTAL COORDINATES ARE BASED ON IL STATE
PLANE COORDINATES, EAST ZONE GRID AS
ESTABLISHED BY GPS OBSERVATION. ELEVATIONS
ARE BASED ON NAVD 88 OBTAINED BY DIFFERENTIAL
LEVELING METHODS.



PREPARED BY:
Hampton, Lenzini, and Renwick Inc.
380 Shepard Drive
Elgin, Illinois 60123-7010
847-697-6700