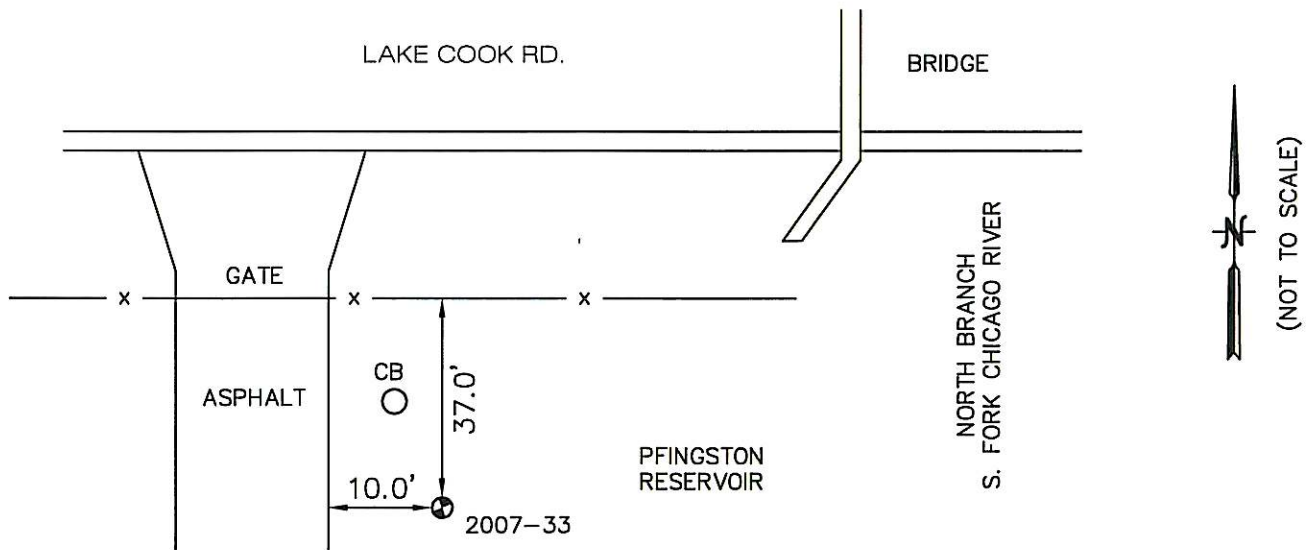


BENCH MARK VILLAGE OF DEERFIELD, IL

<u>LOCATION ADDRESS:</u> PFINKSTON RD. RESERVOIR DEERFIELD, IL	<u>MONUMENT</u> 2007-33	<u>DEPTH</u> 9'	<u>ELEVATION:</u> 659.18	<u>NORTHING:</u> 1998555.51 <u>EASTING:</u> 1114633.85
--	-----------------------------------	---------------------------	-----------------------------	---

DESCRIPTION

SOUTHWEST CORNER OF LAKE COOK RD. & BRIDGE OVER NORTH BRANCH OF SOUTH FORK OF CHICAGO RIVER BEHIND FENCE TO PFINKSTON RD. RESERVOIR



COORDINATE INFORMATION:
HORIZONTAL COORDINATES ARE BASED ON IL STATE PLANE COORDINATES, EAST ZONE GRID AS ESTABLISHED BY GPS OBSERVATION. ELEVATIONS ARE BASED ON NAVD 88 OBTAINED BY DIFFERENTIAL LEVELING METHODS.



PREPARED BY:
Hampton, Lenzini, and Renwick Inc.
380 Shepard Drive
Elgin, Illinois 60123-7010
847-697-6700