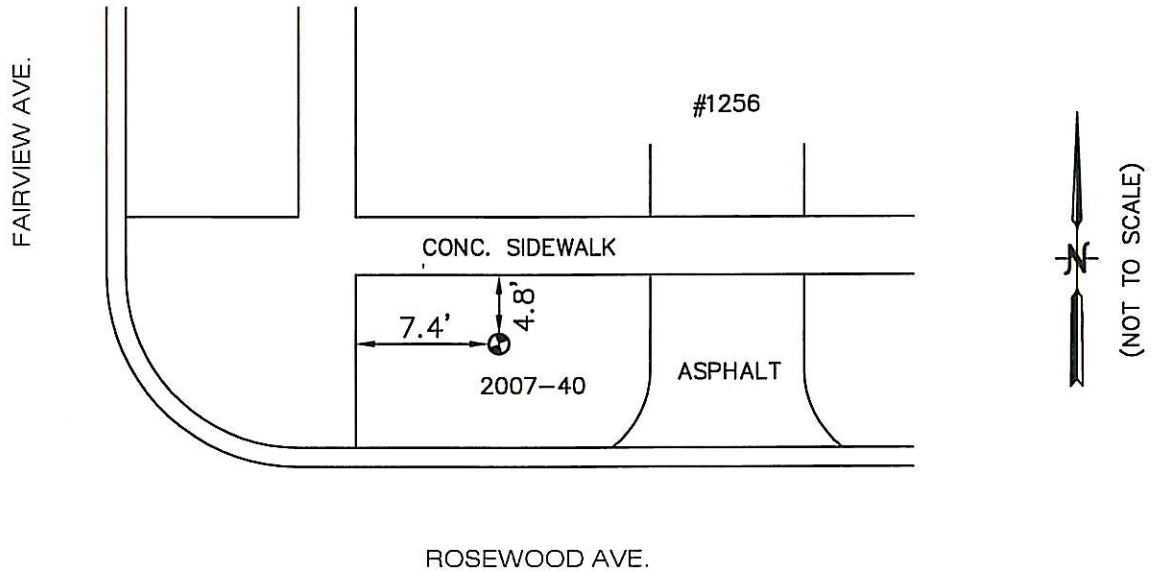


# BENCH MARK VILLAGE OF DEERFIELD, IL

<u>LOCATION ADDRESS:</u> 1256 ROSEWOOD AVE. DEERFIELD, IL	<u>MONUMENT</u> 2007-40	<u>DEPTH</u> 12'	<u>ELEVATION:</u> 663.47	<u>NORTHING:</u> 2000660.85 <u>EASTING:</u> 1112633.02
---	----------------------------	---------------------	-----------------------------	---

## DESCRIPTION

NORTHEAST CORNER OF ROSEWOOD AVE. & FAIRVIEW AVE.  
AT 1256 ROSEWOOD AVENUE



COORDINATE INFORMATION:  
HORIZONTAL COORDINATES ARE BASED ON IL STATE  
PLANE COORDINATES, EAST ZONE GRID AS  
ESTABLISHED BY GPS OBSERVATION. ELEVATIONS  
ARE BASED ON NAVD 88 OBTAINED BY DIFFERENTIAL  
LEVELING METHODS.



PREPARED BY:  
Hampton, Lenzini, and Renwick Inc.  
380 Shepard Drive  
Elgin, Illinois 60123-7010  
847-697-6700